

# Rampion 2 Wind Farm

## Category 6: Environmental Statement

### Volume 3, Chapter 25: Historic environment – Figures (Part 4 of 5)

**Date: August 2024**

**Revision C**

Document Reference: 6.3.25

Pursuant to: APFP Regulations 5 (2) (a), 5 (2) (m)

Ecodoc number: 004884771-03



## Document revisions

Revision	Date	Status/reason for issue	Author	Checked by	Approved by
<b>A</b>	04/08/2023	Final for DCO Application	WSP	RED	RED
<b>B</b>	03/06/2024	Edit to Figures 25.5, 25.6 and 25.7	WSP	RED	RED
<b>C</b>	01/08/2024	Edits to Figures 25.7 and 25.8	WSP	RED	RED

# Contents

---

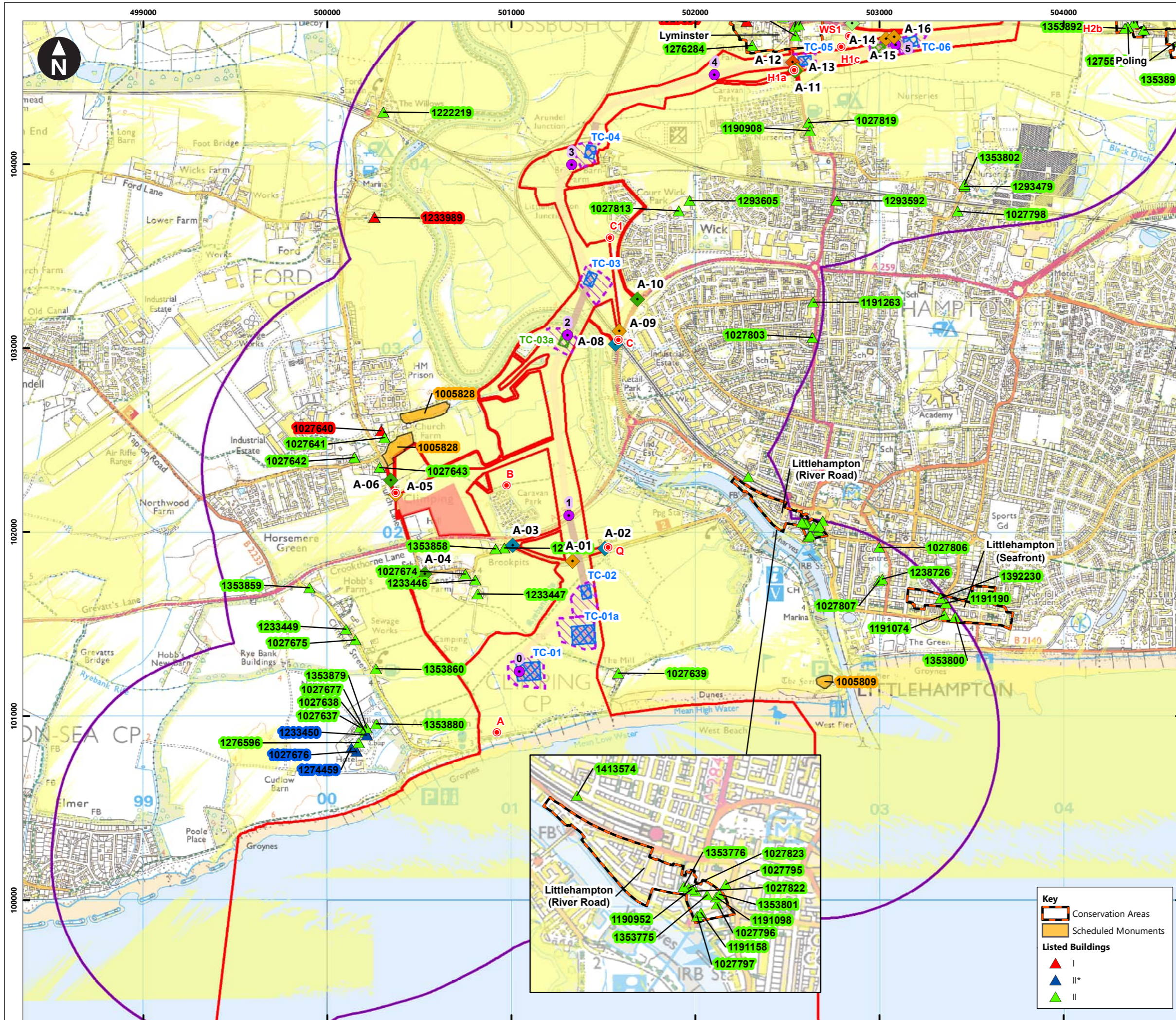
## List of Figures

Figure number	Figure Title	APFP number	Ecodoc number	Revision	Revision Date	Document Part
Figure 25.1	ES Assessment Boundary	5 (2) (a)	004866435-01	A	04/08/2023	Part 1 of 5
Figure 25.2a-h	Designated heritage assets within Study Area	5 (2) (m)	004866436-01	A	04/08/2023	Part 1 of 5
Figure 25.3a-x	HER monument records and UKHO wreck sites	5 (2) (m)	004866437-01	A	04/08/2023	Part 2 of 5
Figure 25.4a-h	Archaeological Notification Areas and features identified by remote sensing (LiDAR and aerial photographs) and historic maps	5 (2) (m)	004866438-01	B	04/08/2023	Part 3 of 5
Figure 25.5a-h	Designated heritage assets assessed for effects through change to setting from onshore development	5 (2) (m)	004866439-01	B	03/06/2024	Part 3 of 5
Figure 25.6a-h	Designated heritage assets with onshore cable corridor and ZTV	5 (2) (a)	004866440-01	B	03/06/2023	Part 4 of 5

---

<b>Figure number</b>	<b>Figure Title</b>	<b>APFP number</b>	<b>Ecodoc number</b>	<b>Revision</b>	<b>Revision Date</b>	<b>Document Part</b>
Figure 25.7a-c	Designated heritage assets with onshore substation and ZTV	5 (2) (a)	004891443-01	C	01/08/2024	Part 4 of 5
Figure 25.8a-c	Designated heritage assets with Bolney substation extension and ZTV	5 (2) (a)	004891444-01	B	01/08/2024	Part 4 of 5
Figure 25.9a-g	Designated heritage assets assessed for effects through change to setting from offshore development	5 (2) (a)	004891445-01	A	04/08/2023	Part 5 of 5
Figure 25.10a-g	Designated heritage assets assessed for effects through change to setting from offshore development and ZTV	5 (2) (a)	004891446-01	A	04/08/2023	Part 5 of 5
Figure 25.11	Historic environment Zone of Influence	5 (2) (a)	004891447-01	A	04/08/2023	Part 5 of 5

Page intentionally blank



Service Layer Credits: Contains OS data © Crown Copyright and database right 2023  
 © Crown copyright and database rights 2023 Ordnance Survey 0100031673

**Key**

- Proposed DCO Order Limits
- 1km study area
- Trenchless Crossing (TC) compounds
- Trenchless Crossing (TC) compound alternatives
- Trenchless Crossing (TC) limits of deviation
- Temporary construction compound

**Proposed onshore cable construction corridor**

- Indicative trenchless section
- Indicative open cut section

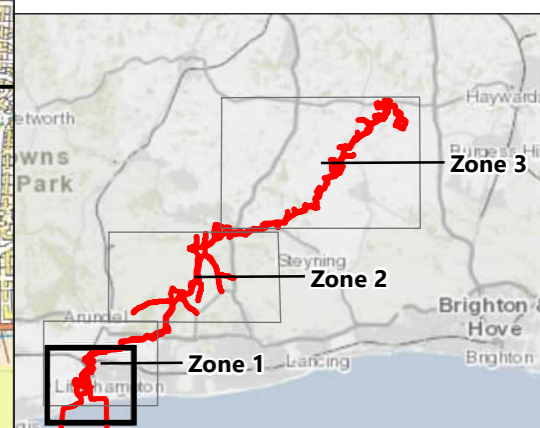
**Onshore cable route KM points**

- Onshore cable route

**Access from public highway**

- ◆ Construction
- ◇ Construction & operational
- ◆ Light construction
- ◇ Light construction & operational
- ◆ Operational
- Viewpoints

Area onshore cable corridor construction works is theoretically visible



0 0.1 0.2 0.4 0.6 0.8  
 Kilometres  
 1:20,000  
 British National Grid Transverse Mercator

Rampion Extension Development

Rampion 2 Offshore Wind Farm  
 Figure 25.6a Designated heritage assets with onshore cable corridor and ZTV

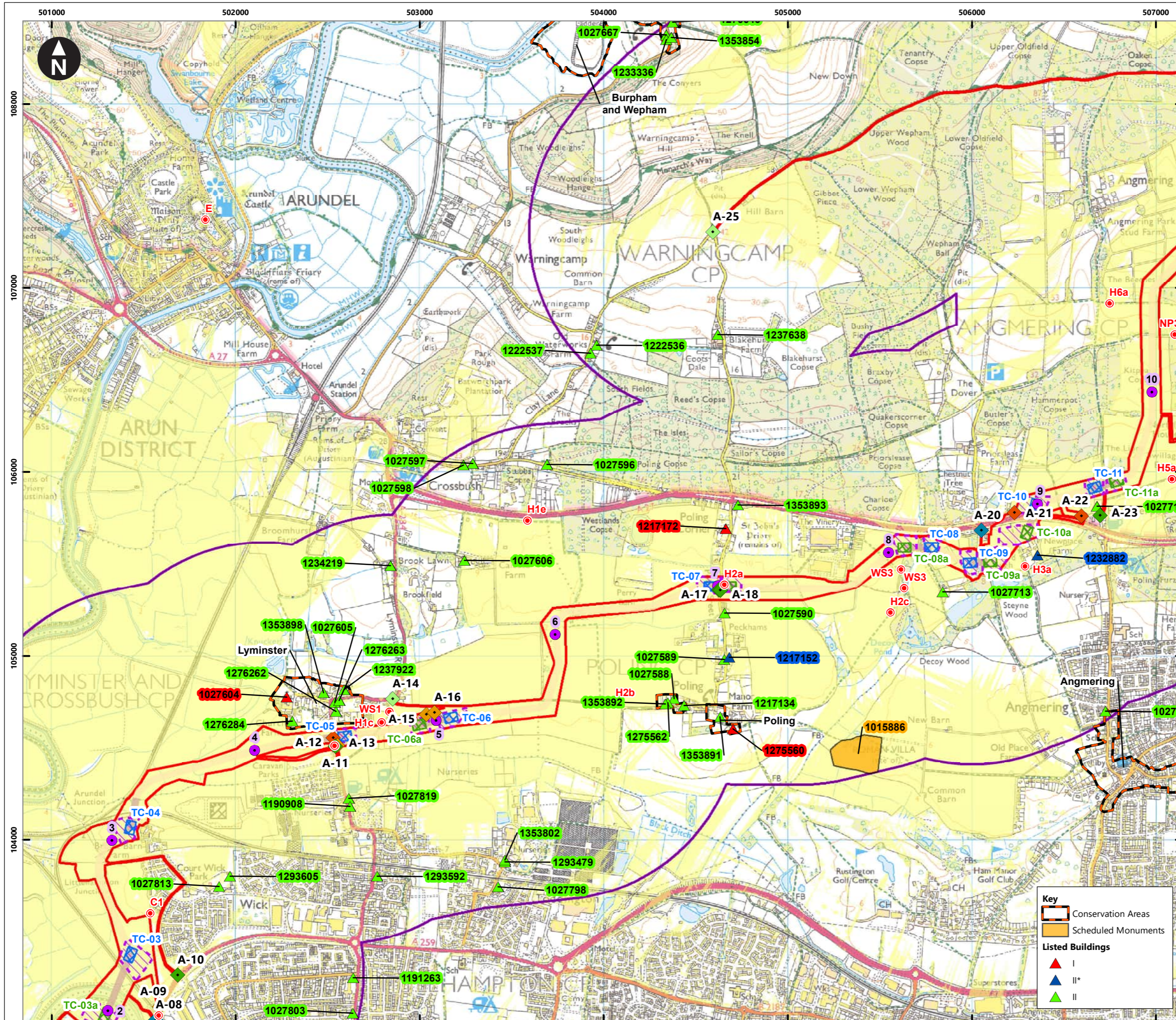
**Key**

- Conservation Areas
- Scheduled Monuments

**Listed Buildings**

- ▲ I
- ▲ II\*
- ▲ II

System Identifier: 42285-WSP-ES-ON-FG-OH-2474		Version: 2.0	
Company: WSP	Drawn By: SUTET	Chk/Prvd: ASTBD	Drawn Date: Status: 29/05/2024 FINAL



Service Layer Credits: Contains OS data © Crown Copyright and database right 2023  
 © Crown copyright and database rights 2023 Ordnance Survey 0100031673

**Key**

- Proposed DCO Order Limits
- 1km study area
- Trenchless Crossing (TC) compounds
- Trenchless Crossing (TC) compound alternatives
- Trenchless Crossing (TC) limits of deviation

**Proposed onshore cable construction corridor**

- Indicative trenchless section
- Indicative open cut section

**Onshore cable route KM points**

- Onshore cable route

**Access from public highway**

- Construction
- Construction & operational
- Light construction
- Light construction & operational
- Operational
- Viewpoints
- Area onshore cable corridor construction works is theoretically visible

**Key**

- Conservation Areas
- Scheduled Monuments

**Listed Buildings**

- I
- II\*
- II

Rampion Extension Development

**Rampion 2 WIND FARM**

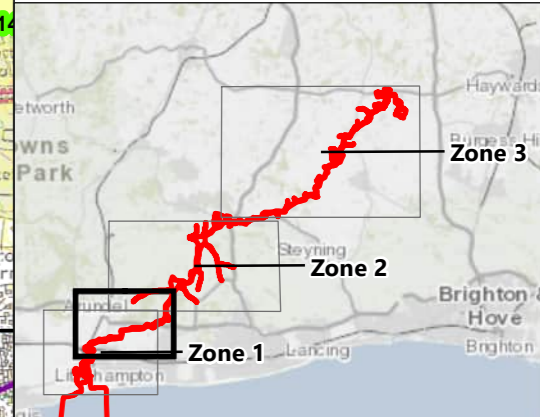
Rampion 2 Offshore Wind Farm

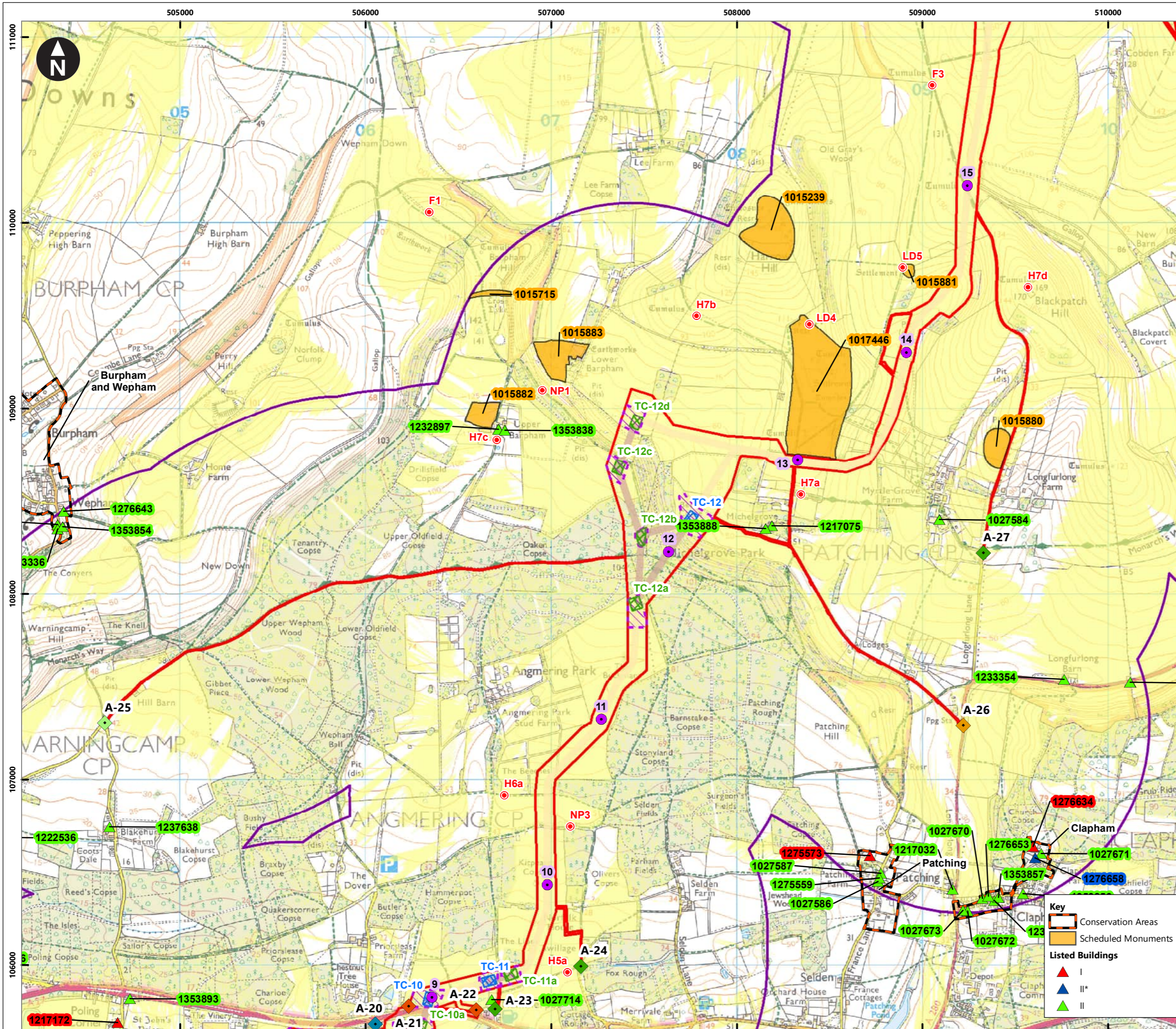
Figure 25.6b Designated heritage assets with onshore cable corridor and ZTV

System Identifier: 42285-WSP-EX-ON-FG-OH-5021      Version: 2.0

Company: WSP      Drawn By: SUTET      Chk/Prvrd: ASTBD      Drawn Date: 29/05/2024      Status: FINAL

Scale: 0 0.1 0.2 0.4 0.6 0.8 Kilometres  
 1:20,000  
 British National Grid Transverse Mercator





Service Layer Credits: Contains OS data © Crown Copyright and database right 2023  
 © Crown copyright and database rights 2023 Ordnance Survey 0100031673

**Key**

- Proposed DCO Order Limits
- 1km study area
- Trenchless Crossing (TC) compounds
- Trenchless Crossing (TC) compound alternatives
- Trenchless Crossing (TC) limits of deviation

**Proposed onshore cable construction corridor**

- Indicative trenchless section
- Indicative open cut section

**Onshore cable route KM points**

- Onshore cable route

**Access from public highway**

- Construction
- Construction & operational
- Light construction
- Light construction & operational
- Operational
- Viewpoints
- Area onshore cable corridor construction works is theoretically visible

**Key**

- Conservation Areas
- Scheduled Monuments

**Listed Buildings**

- I
- II\*
- II

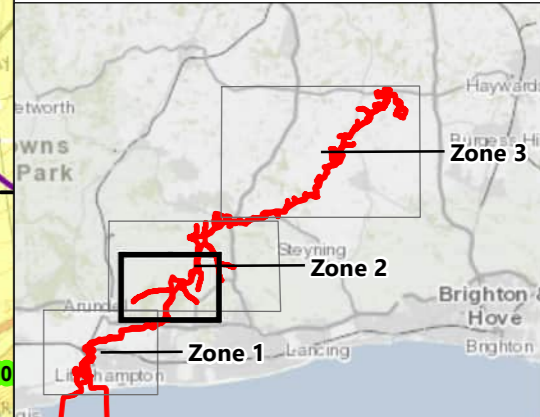
Rampion Extension Development

Rampion 2 Offshore Wind Farm

Figure 25.6c Designated heritage assets with onshore cable corridor and ZTV

System Identifier: 42285-WSP-EX-ON-FG-OH-5021      Version: 2.0

Company: WSP      Drawn By: SUTET      Chk/Prvd: ASTBD      Drawn Date: 29/05/2024      Status: FINAL



0 0.1 0.2 0.4 0.6 0.8  
 Kilometres  
 1:20,000  
 British National Grid Transverse Mercator

Rampion Extension Development

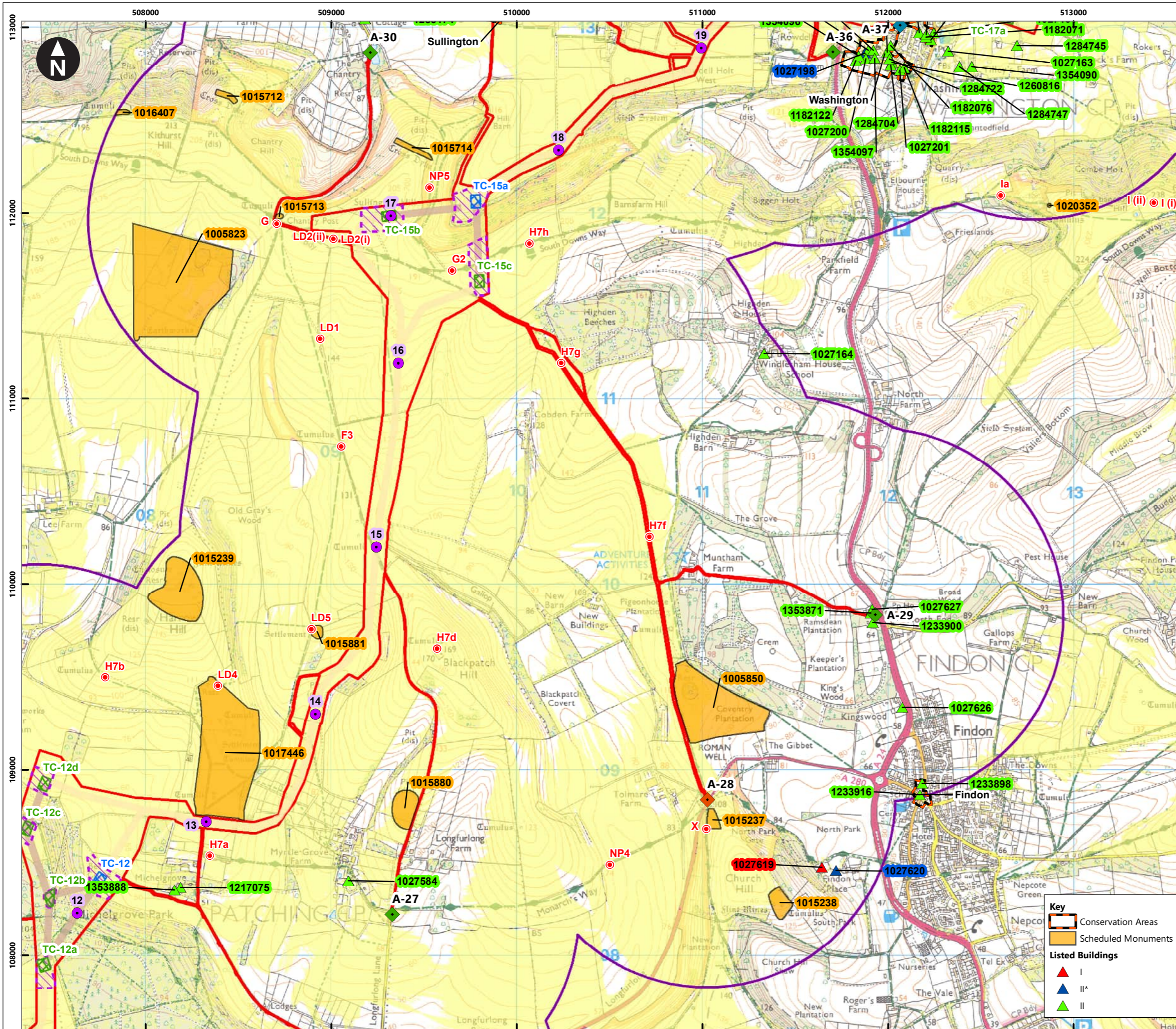
Rampion 2 Offshore Wind Farm

Figure 25.6c Designated heritage assets with onshore cable corridor and ZTV

System Identifier: 42285-WSP-EX-ON-FG-OH-5021      Version: 2.0

Company: WSP      Drawn By: SUTET      Chk/Prvd: ASTBD      Drawn Date: 29/05/2024      Status: FINAL





Service Layer Credits: Contains OS data © Crown Copyright and database right 2023  
 © Crown copyright and database rights 2023 Ordnance Survey 0100031673

**Key**

- Proposed DCO Order Limits
- 1km study area
- Trenchless Crossing (TC) compounds
- Trenchless Crossing (TC) compound alternatives
- Trenchless Crossing (TC) limits of deviation

**Proposed onshore cable construction corridor**

- Indicative trenchless section
- Indicative open cut section

**Onshore cable route KM points**

- Onshore cable route

**Access from public highway**

- Construction
- Construction & operational
- Light construction
- Operational
- Viewpoints
- Area onshore cable corridor construction works is theoretically visible

**Key**

- Conservation Areas
- Scheduled Monuments

**Listed Buildings**

- I
- II\*
- II

Rampion Extension Development

Rampion 2 Offshore Wind Farm

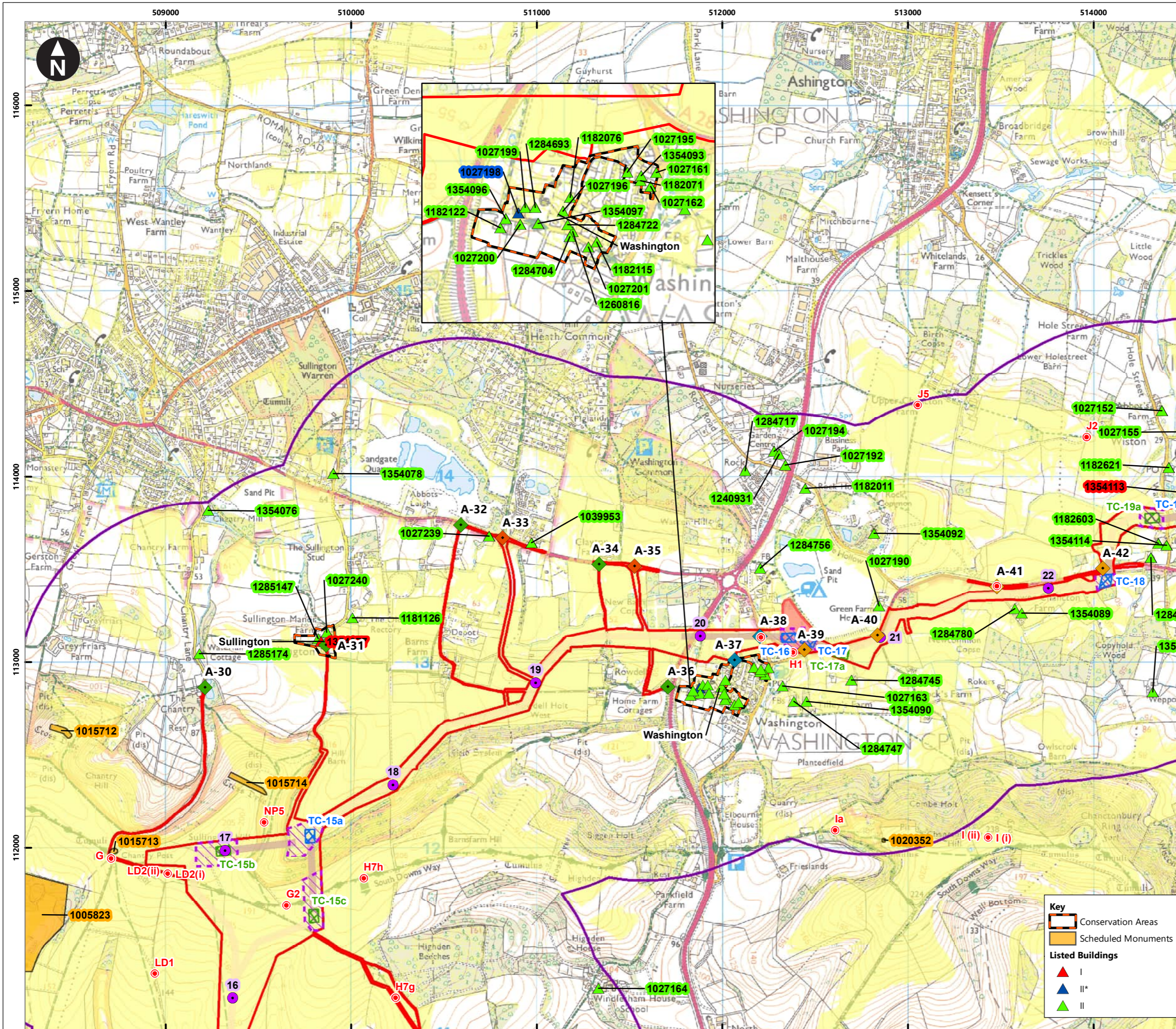
Figure 25.6d Designated heritage assets with onshore cable corridor and ZTV

System Identifier: 42285-WSP-EX-ON-FG-OH-5021      Version: 2.0

Company: WSP	Drawn By: SUTET	Chk/Prvrd: ASTBD	Drawn Date: 29/05/2024	Status: FINAL
--------------	-----------------	------------------	------------------------	---------------

Scale: 0 0.1 0.2 0.4 0.6 0.8 Kilometres  
 1:20,000  
 British National Grid Transverse Mercator

Inset map showing Zone 1, Zone 2, and Zone 3.



Service Layer Credits: Contains OS data © Crown Copyright and database right 2023  
 © Crown copyright and database rights 2023 Ordnance Survey 0100031673

**Key**

- Proposed DCO Order Limits
- 1km study area
- Trenchless Crossing (TC) compounds
- Trenchless Crossing (TC) compound alternatives
- Trenchless Crossing (TC) limits of deviation
- Temporary construction compound

**Proposed onshore cable construction corridor**

- Indicative trenchless section
- Indicative open cut section

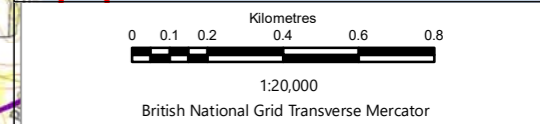
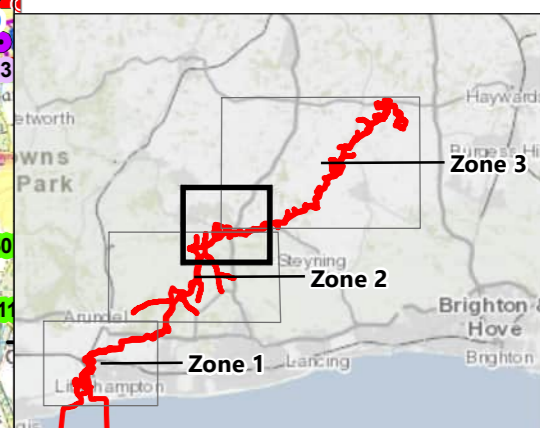
**Onshore cable route KM points**

- Onshore cable route

**Access from public highway**

- ◆ Construction
- ◆ Construction & operational
- ◆ Light construction
- ◆ Operational
- Viewpoints

Area onshore cable corridor construction works is theoretically visible



Rampion Extension Development

Rampion 2 Offshore Wind Farm

Figure 25.6e Designated heritage assets with onshore cable corridor and ZTV

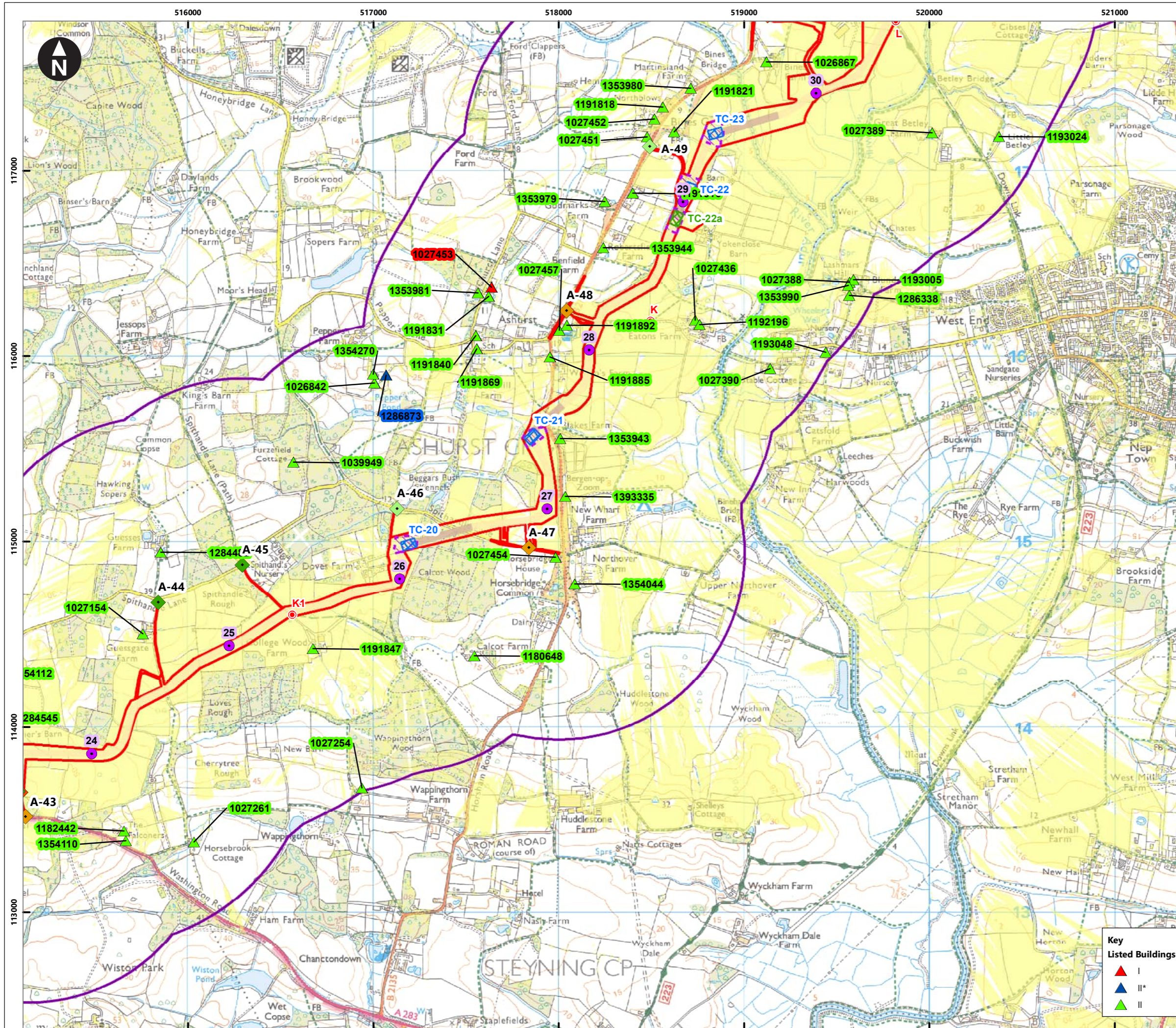
**Key**

- Conservation Areas
- Scheduled Monuments

**Listed Buildings**

- ▲ I
- ▲ II\*
- ▲ II

System Identifier: 42285-WSP-EX-ON-FG-OH-5021e		Version: 2.0
Company: WSP	Drawn By: SUTET	Chk/Prvd: ASTBD
Drawn Date: 29/05/2024	Status: FINAL	



Service Layer Credits: Contains OS data © Crown Copyright and database right 2023  
 © Crown copyright and database rights 2023 Ordnance Survey 0100031673

**Key**

- Proposed DCO Order Limits
- 1km study area
- Trenchless Crossing (TC) compounds
- Trenchless Crossing (TC) compound alternatives
- Trenchless Crossing (TC) limits of deviation

**Proposed onshore cable construction corridor**

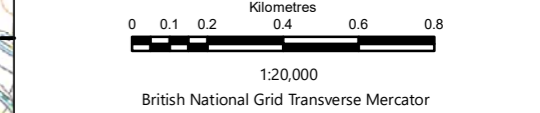
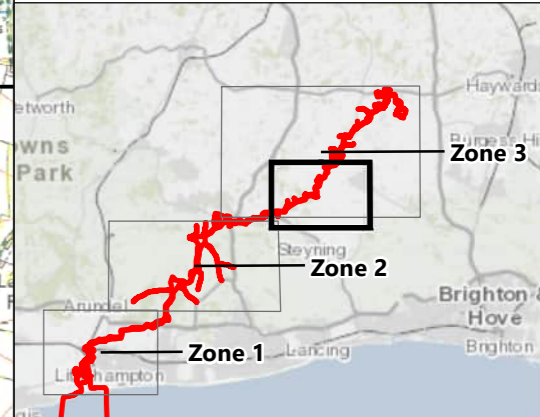
- Indicative trenchless section
- Indicative open cut section

**Onshore cable route KM points**

- Onshore cable route

**Access from public highway**

- ◆ Construction
- ◆ Construction & operational
- ◆ Light construction & operational
- ◆ Operational
- Viewpoints
- Area onshore cable corridor construction works is theoretically visible



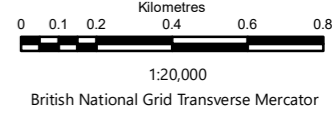
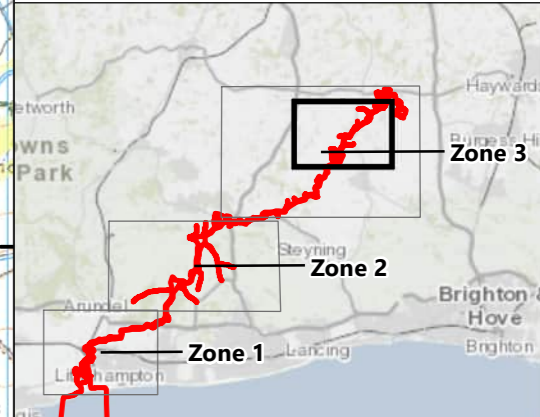
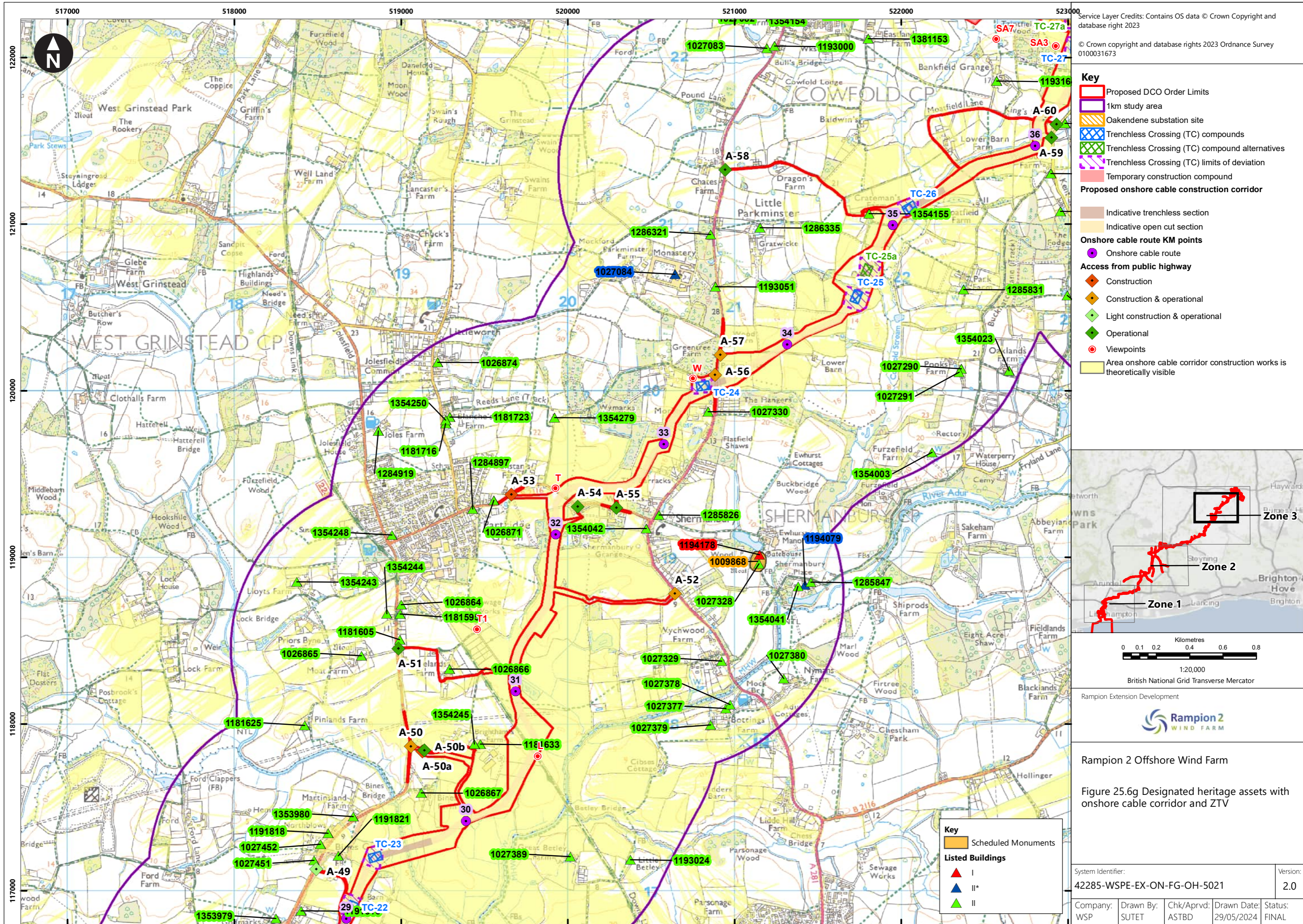
Rampion Extension Development

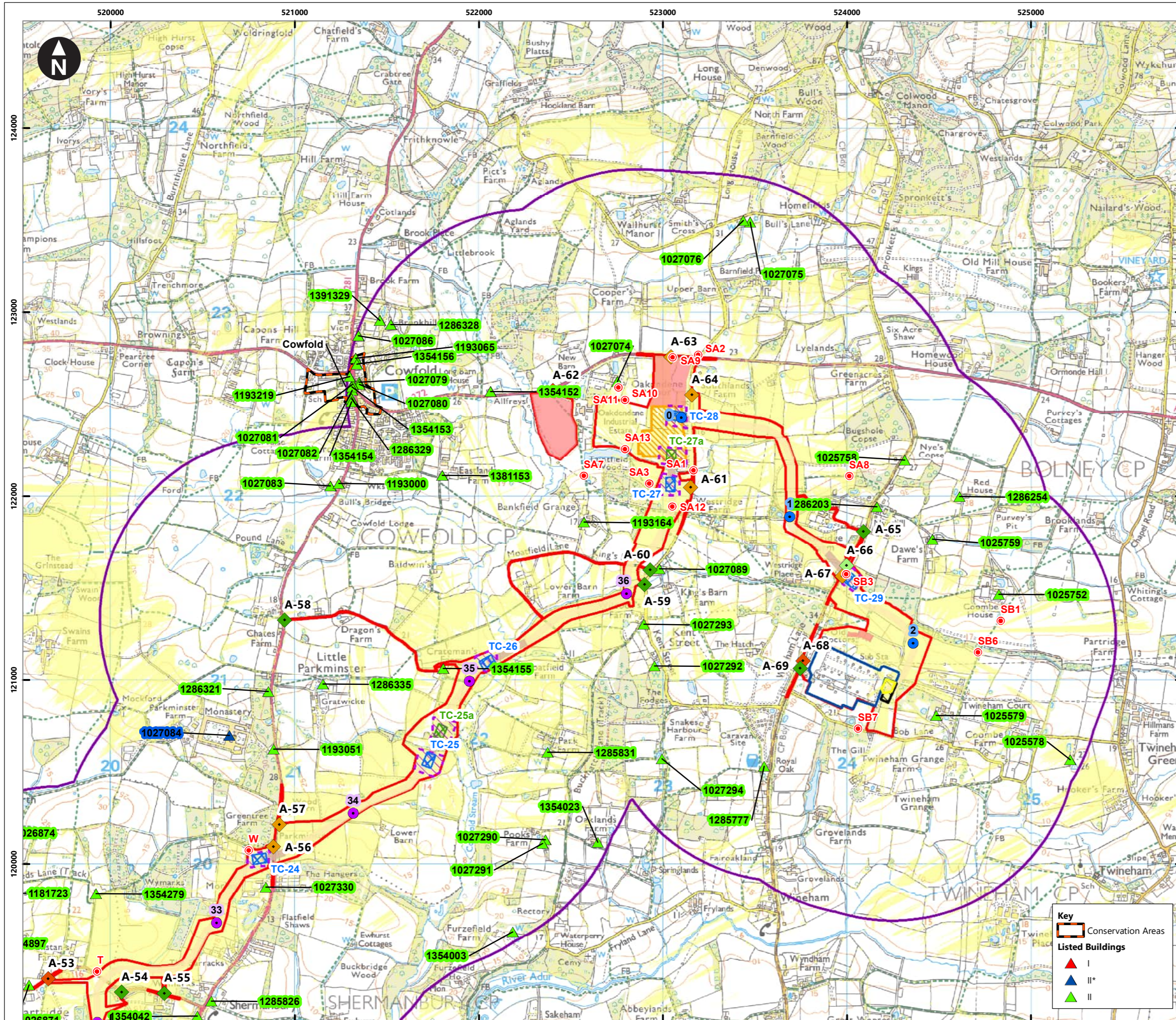
Rampion 2 Offshore Wind Farm  
 Figure 25.6f Designated heritage assets with onshore cable corridor and ZTV

**Key Listed Buildings**

- ▲ I
- ▲ II\*
- ▲ II

System Identifier: 42285-WSP-EX-ON-FG-OH-5021		Version: 2.0	
Company: WSP	Drawn By: SUTET	Chk/Prvrd: ASTBD	Drawn Date: Status: 29/05/2024 FINAL





Service Layer Credits: Contains OS data © Crown Copyright and database right 2023  
 © Crown copyright and database rights 2023 Ordnance Survey 0100031673

**Key**

- Proposed DCO Order Limits
- 1km study area
- Bolney Substation extension (AIS)
- Bolney Substation extension (GIS)
- Existing National Grid Substation
- Oakendene substation site
- Trenchless Crossing (TC) compounds
- Trenchless Crossing (TC) compound alternatives
- Trenchless Crossing (TC) limits of deviation
- Temporary construction compound

**Proposed onshore cable construction corridor**

- Indicative trenchless section
- Indicative open cut section

**Onshore cable route KM points**

- Onshore Substation connection
- Onshore cable route

**Access from public highway**

- Construction
- Construction & operational
- Light construction & operational
- Operational
- Viewpoints
- Area onshore cable corridor construction works is theoretically visible

**Key**

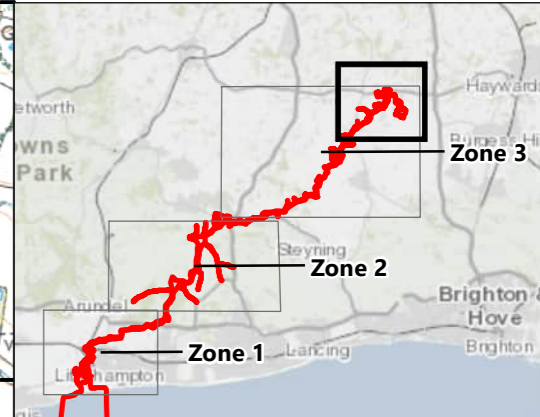
- Conservation Areas
- Listed Buildings
- I
- II\*
- II

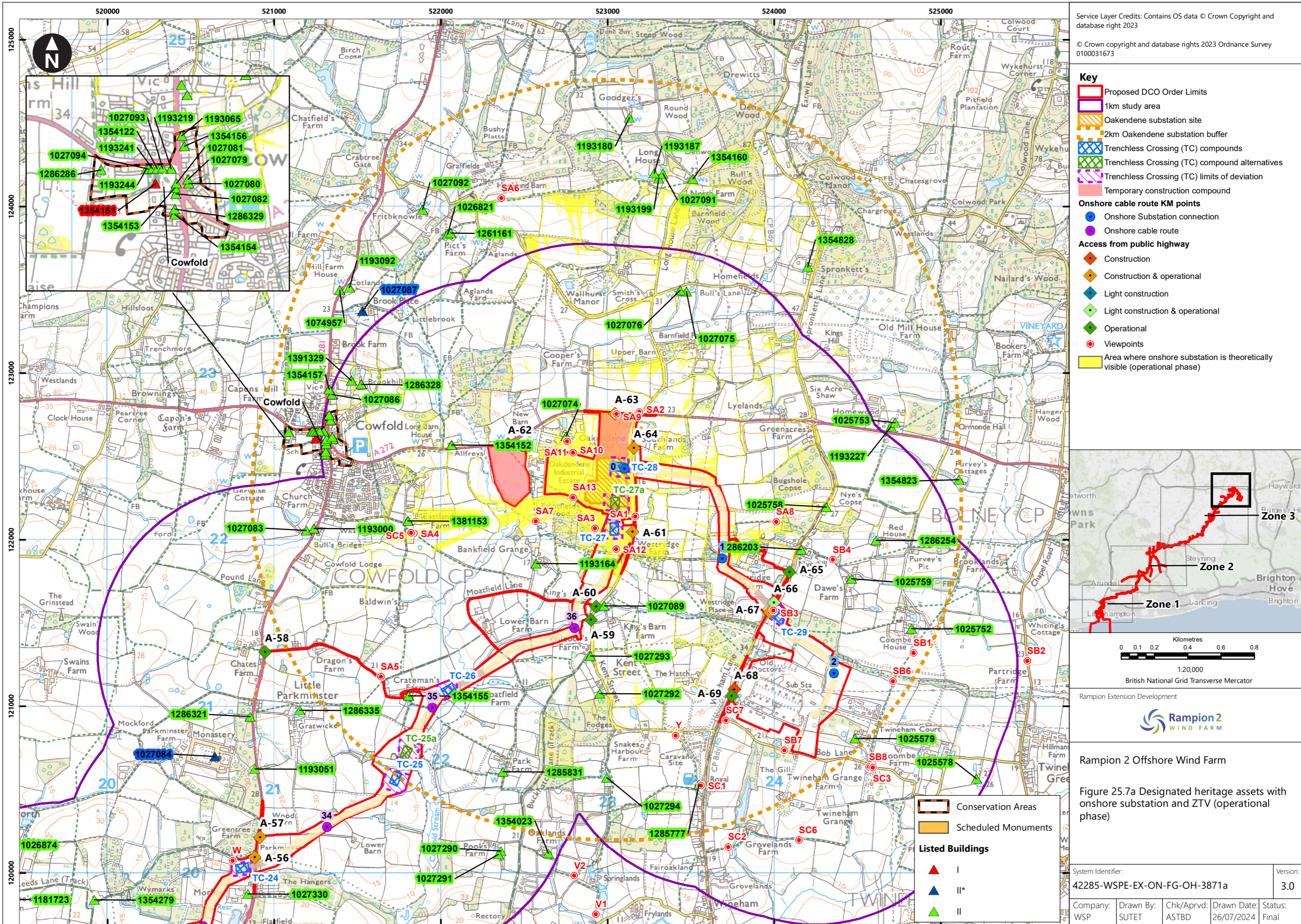
**Figure 25.6h Designated heritage assets with onshore cable corridor and ZTV**

System Identifier: 42285-WSP-ES-ON-FG-OH-2474 | Version: 2.0

Company: WSP | Drawn By: SHEPS | Chk/Prvd: ASTBD | Drawn Date: 29/05/2024 | Status: Final

Document uncontrolled when printed | ISO A3 Landscape





Service Layer Credits: Contains OS data © Crown Copyright and database right 2023  
 © Crown copyright and database rights 2023 Ordnance Survey 0100031673

**Key**

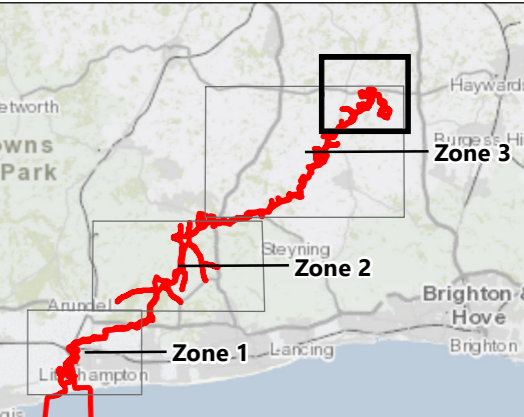
- Proposed DCO Order Limits
- 1km study area
- Oakendene substation site
- 2km Oakendene substation buffer
- Trenchless Crossing (TC) compounds
- Trenchless Crossing (TC) compound alternatives
- Trenchless Crossing (TC) limits of deviation
- Temporary construction compound

**Onshore cable route KM points**

- Onshore Substation connection
- Onshore cable route

**Access from public highway**

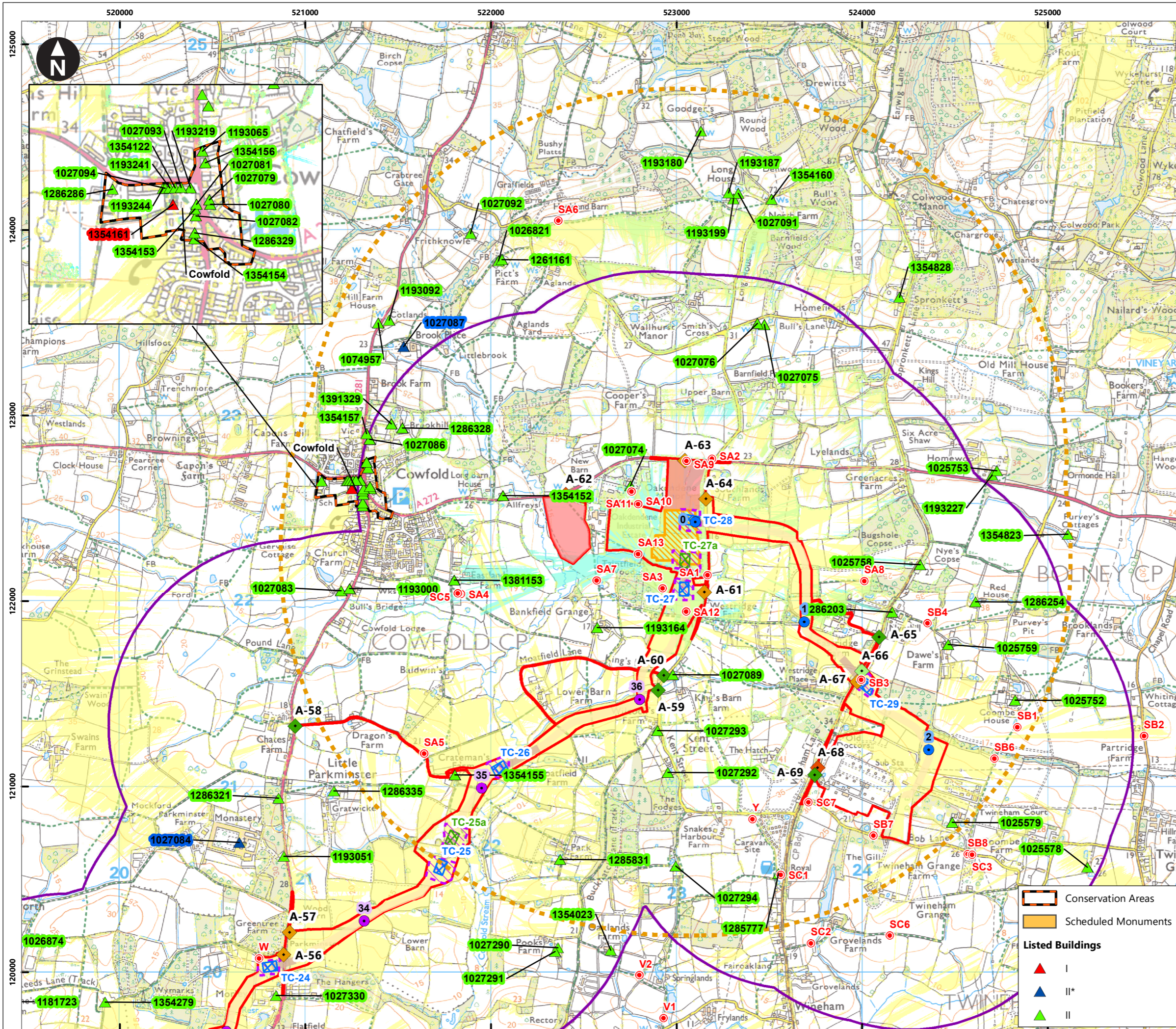
- Construction
- Construction & operational
- Light construction
- Light construction & operational
- Operational
- Viewpoints
- Area where onshore substation is theoretically visible (operational phase)



Rampion Extension Development

Rampion 2 Offshore Wind Farm  
 Figure 25.7a Designated heritage assets with onshore substation and ZTV (operational phase)

System Identifier:		Version:	
42285-WSP-EX-ON-FG-OH-3871a		3.0	
Company:	Drawn By:	Chk/Prvd:	Drawn Date:
WSP	SUTET	ASTBD	26/07/2024
Status:	Final		



Service Layer Credits: Contains OS data © Crown Copyright and database right 2023

© Crown copyright and database rights 2024 Ordnance Survey 0100031673

**Key**

- Proposed DCO Order Limits
- 1km study area
- Oakdene substation site
- 2km Oakdene substation buffer
- Trenchless Crossing (TC) compounds
- Trenchless Crossing (TC) compound alternatives
- Trenchless Crossing (TC) limits of deviation
- Temporary construction compound

**Onshore cable route KM points**

- Onshore Substation connection
- Onshore cable route

**Access from public highway**

- Construction
- Construction & operational
- Light construction
- Light construction & operational
- Operational
- Viewpoints

**Visibility areas**

- Area where onshore substation is theoretically visible (operational phase)
- Area onshore cable corridor construction works is theoretically visible
- Area where both onshore substation and onshore cable corridor construction works is theoretically visible

**Conservation Areas**

- Scheduled Monuments

**Listed Buildings**

- I
- II\*
- II

**Inset Map:** Shows the project location relative to Zone 1, Zone 2, and Zone 3.

**Scale:** 0 0.1 0.2 0.4 0.6 0.8 Kilometres

**Scale:** 1:20,000

**Projection:** British National Grid Transverse Mercator

**Project Information:**

Rampion Extension Development

**Rampion 2 WIND FARM**

Rampion 2 Offshore Wind Farm

Figure 25.7b Designated heritage assets with onshore substation and ZTV (operational phase)

**System Identifier:** 42285-WSP-EX-ON-FG-OH-3871b

**Version:** 3.0

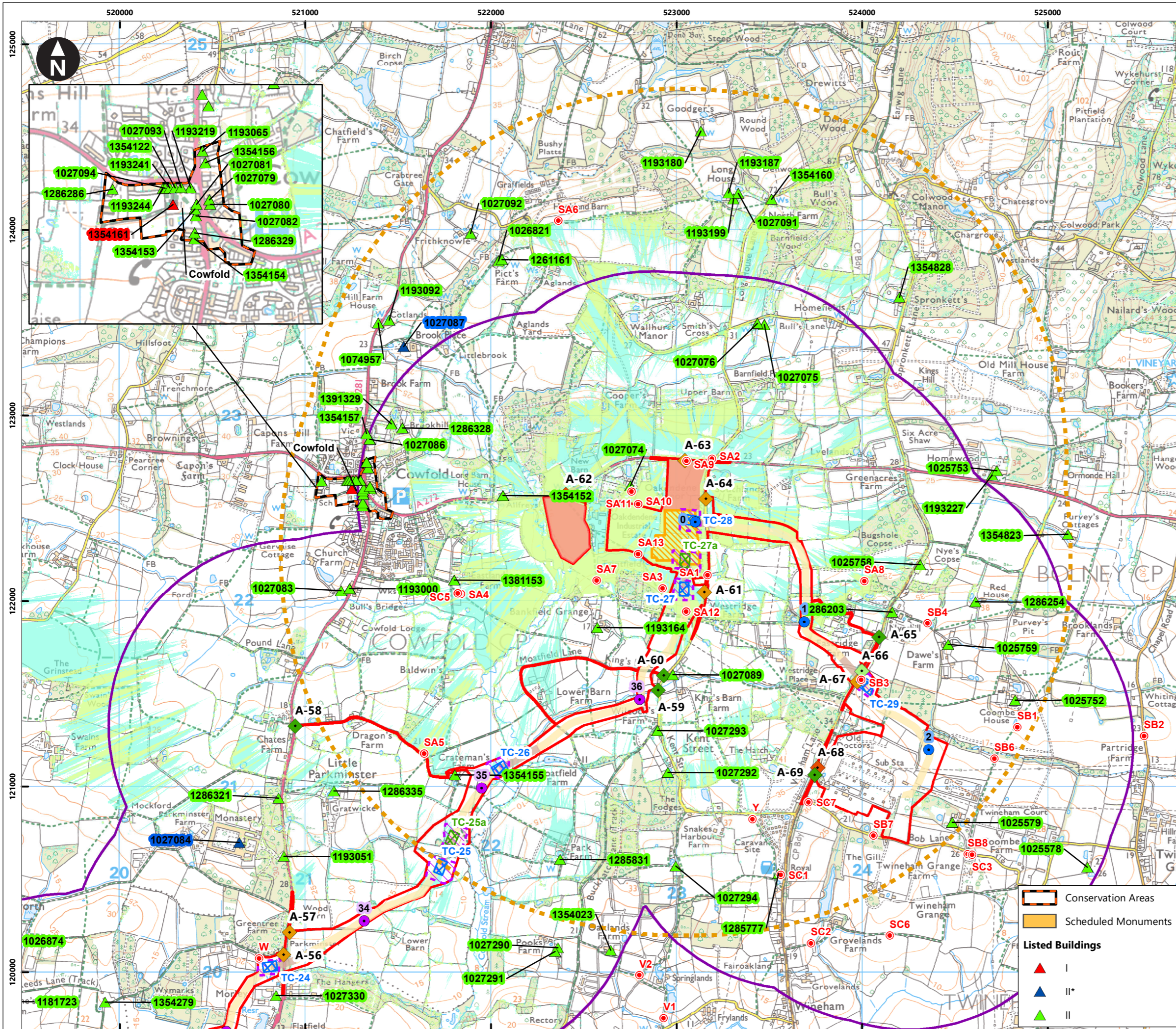
**Company:** WSP

**Drawn By:** SHEPS

**Chk/Prvrd:** ASTBD

**Drawn Date:** 26/07/2024

**Status:** FINAL



Service Layer Credits: Contains OS data © Crown Copyright and database right 2023  
 © Crown copyright and database rights 2023 Ordnance Survey 0100031673

**Key**

- Proposed DCO Order Limits
- 1km study area
- Oakdene substation site
- 2km Oakdene substation buffer
- Trenchless Crossing (TC) compounds
- Trenchless Crossing (TC) compound alternatives
- Trenchless Crossing (TC) limits of deviation
- Temporary construction compound

**Onshore cable route KM points**

- Onshore Substation connection
- Onshore cable route

**Access from public highway**

- Construction
- Construction & operational
- Light construction
- Light construction & operational
- Operational
- Viewpoints

Area where temporary construction compound modelled at 20m is theoretically visible. Visibility was modelled at 20m maximum height to account for concrete batching plant height

Areas where temporary construction compound modelled at 7m and 20m is theoretically visible. Visibility was modelled at 7m maximum height to account for the maximum construction vehicle height

**Conservation Areas**

**Scheduled Monuments**

**Listed Buildings**

- I
- II\*
- II

**Zone 1**  
**Zone 2**  
**Zone 3**

0 0.1 0.2 0.4 0.6 0.8  
 Kilometres  
 1:20,000  
 British National Grid Transverse Mercator

Rampion Extension Development

**Rampion 2 WIND FARM**

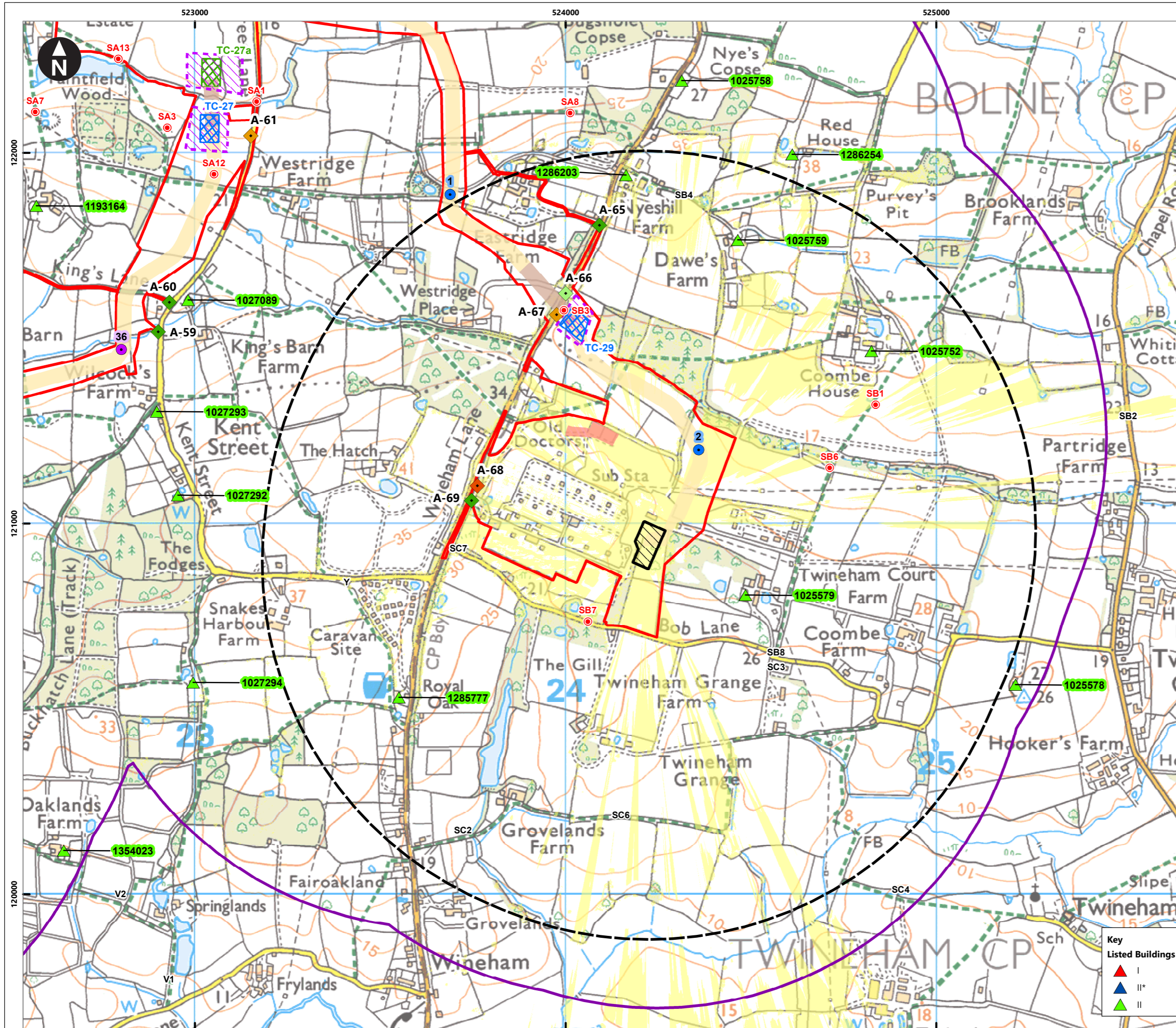
Rampion 2 Offshore Wind Farm

Figure 25.7c Designated heritage assets with onshore substation and temporary construction compounds ZTV

System Identifier: 42285-WSP-EX-ON-FG-OH-3871c Version: 3.0

Company: WSP Drawn By: SHEPS Chk/Prvd: ASTBD Drawn Date: 26/07/2024 Status: Final





Service Layer Credits: Contains OS data © Crown Copyright and database right 2023  
 © Crown copyright and database rights 2024 Ordnance Survey 0100031673

**Key**

- Proposed DCO Order Limits
- 1km study area
- Bolney Substation extension (AIS)
- 1km Bolney extension works buffer
- Trenchless Crossing (TC) compounds
- Trenchless Crossing (TC) compound alternatives
- Trenchless Crossing (TC) limits of deviation
- Temporary construction compound

**Proposed onshore cable construction corridor**

- Indicative trenchless section
- Indicative open cut section

**Onshore cable route KM points**

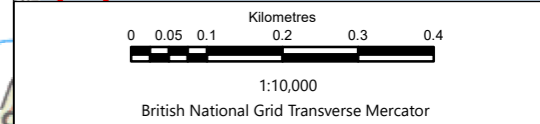
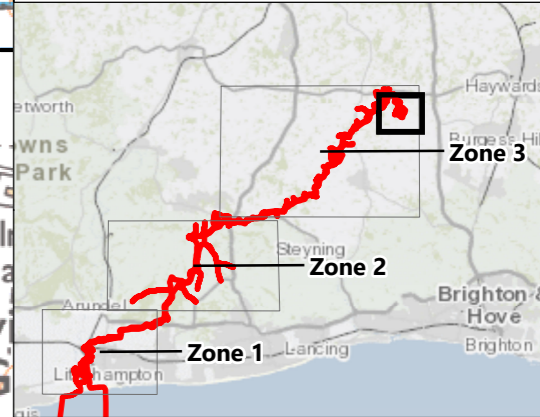
- Onshore Substation connection
- Onshore cable route

**Access from public highway**

- ◆ Construction
- ◆ Construction & operational
- ◆ Light construction & operational
- ◆ Operational

  Area where Bolney substation extension (AIS) is theoretically visible

● Viewpoints



Rampion Extension Development

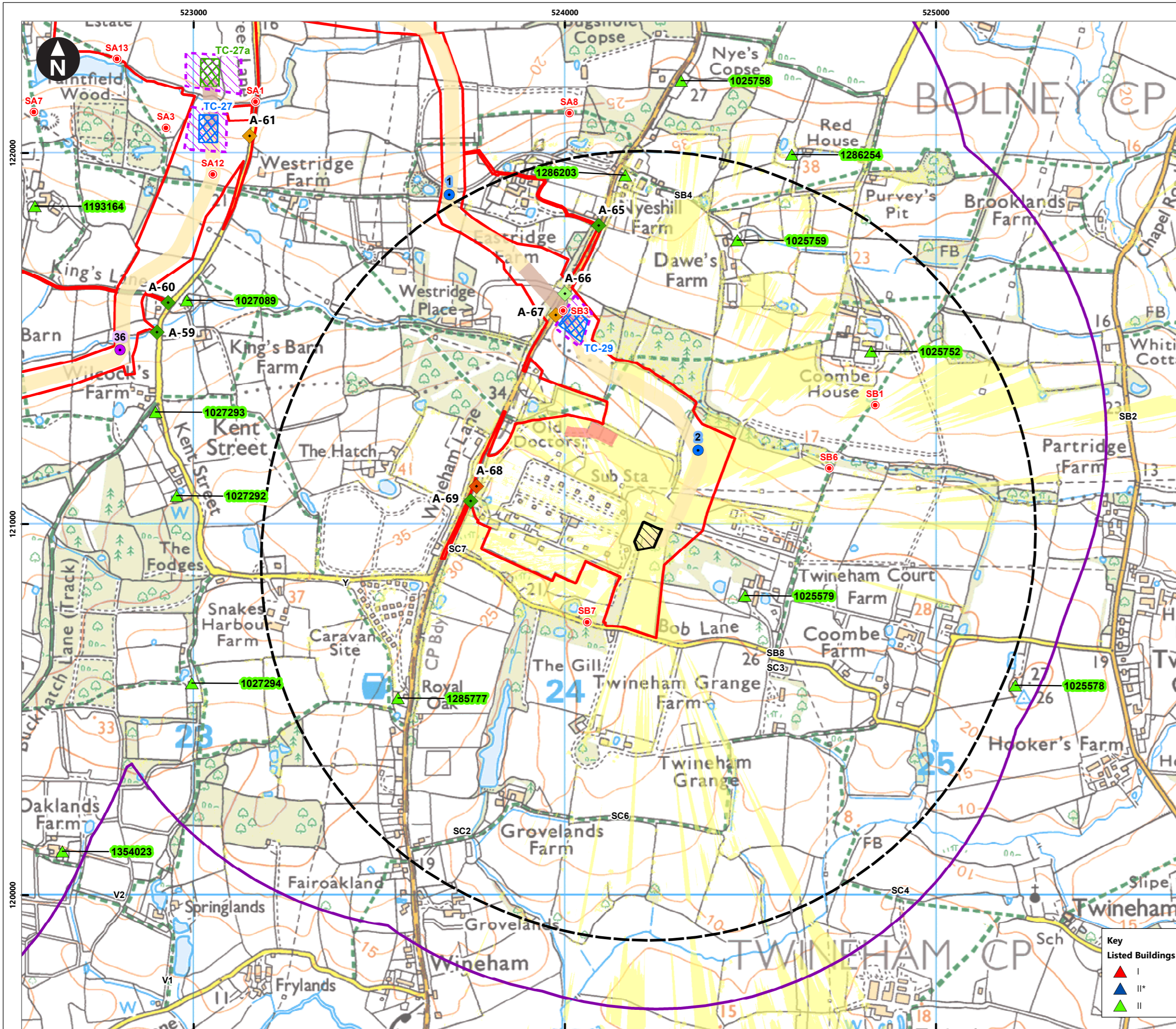
Rampion 2 Offshore Wind Farm

Figure 25.8a Designated heritage assets with Bolney substation extension (AIS) and ZTV (operational phase)

**Key Listed Buildings**

- ▲ I
- ▲ II\*
- ▲ II

System Identifier:		Version:	
42285-WSP-EX-ON-FG-OH-3673a		2.0	
Company:	Drawn By:	Chk/Prvd:	Drawn Date:
WSP	SUTET	ASTBD	04/07/2024
Status:		FINAL	



Service Layer Credits: Contains OS data © Crown Copyright and database right 2023  
 © Crown copyright and database rights 2024 Ordnance Survey 0100031673

**Key**

- Proposed DCO Order Limits
- 1km study area
- Bolney Substation extension (GIS)
- 1km Bolney extension works buffer
- Trenchless Crossing (TC) compounds
- Trenchless Crossing (TC) compound alternatives
- Trenchless Crossing (TC) limits of deviation
- Temporary construction compound

**Proposed onshore cable construction corridor**

- Indicative trenchless section
- Indicative open cut section

**Onshore cable route KM points**

- Onshore Substation connection
- Onshore cable route

**Access from public highway**

- Construction
- Construction & operational
- Light construction & operational
- Operational

**Area where Bolney substation extension (GIS) is theoretically visible**

- Viewpoints

**Key Listed Buildings**

- I
- II\*
- II

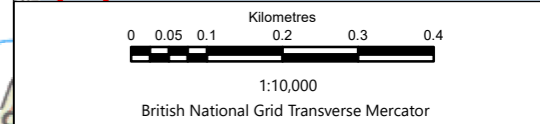
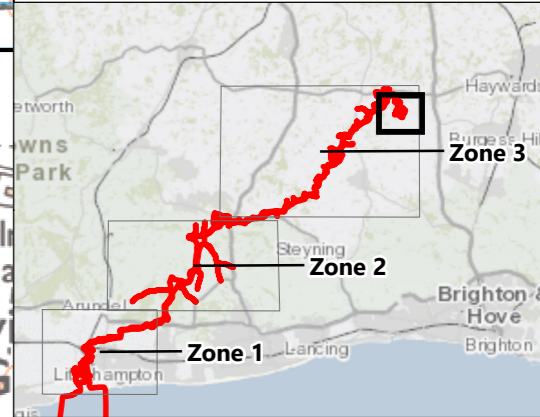
Rampion Extension Development

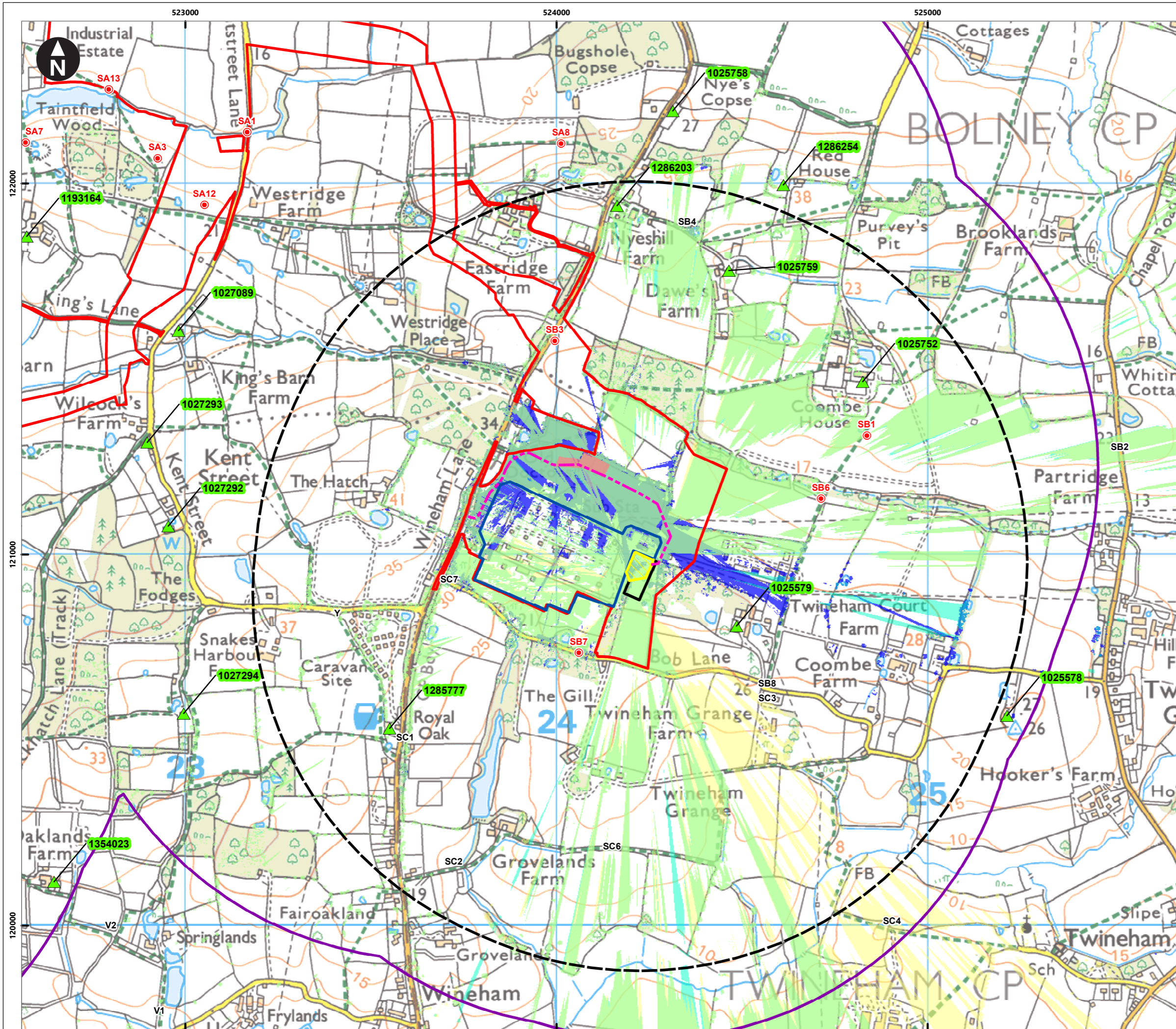
Rampion 2 Offshore Wind Farm

Figure 25.8b Designated heritage assets with Bolney substation extension (GIS) and ZTV (operational phase)

System Identifier: 42285-WSP-EX-ON-FG-OH-3673b Version: 2.0

Company: WSP Drawn By: SUTET Chk/Prvd: ASTBD Drawn Date: 04/07/2024 Status: FINAL





Service Layer Credits: Contains OS data © Crown Copyright and database right 2023  
 © Crown copyright and database rights 2023 Ordnance Survey 0100031673

**Key**

- Proposed DCO Order Limits
- Existing National Grid Substation
- Temporary construction compound
- 1km study area
- Bolney Substation extension (AIS)
- Bolney Substation extension (GIS)
- 1km Bolney extension works buffer
- Construction access

**Listed Buildings**

- II
- Viewpoints

Area where Bolney substation extension (AIS) is theoretically visible

Area where Bolney substation extension (GIS) is theoretically visible

Area where the temporary construction compound for the Bolney substation extension (AIS/GIS) is theoretically visible

Area where both Bolney substation extension (AIS/GIS) is theoretically visible

Area where both Bolney substation extension (AIS/GIS) and temporary construction compound is theoretically visible

0 0.05 0.1 0.2 0.3 0.4  
 Kilometres  
 1:10,000  
 British National Grid Transverse Mercator

Rampion Extension Development

Rampion 2 Offshore Wind Farm

Figure 25.8c ZTV (construction phase) with designated heritage assets - Bolney Substation extension (AIS/GIS) and temporary construction compound

System Identifier: 42285-WSPE-EX-ON-FG-OH-3673c		Version: 2.0
Company: WSP	Drawn By: SHEPS	Chk/Prvrd: ASTBD
Drawn Date: 04/07/2024	Status: Final	